

COUNTY OF SANTA CLARA

JUVENILE JUSTICE COMMISSION
Meeting Minutes-March 3, 2015
Crime Lab, 1st Floor
250 W. Hedding St.
San Jose, CA 95110

Commissioners Present: Penny Blake, Chair
Raul Colunga, Vice Chair
Jean Pennypacker, Secretary
Raymond Blockie
Victoria BurtonBurke
Bonnie Charvez
Kimberly Dong
Gustavo Gonzalez
Ronald Hansen
Nora Manchester
Courtney Macavinta
Vincent Tarpey

Commissioners Absent: Pamela Serrano & Hananeel Jeremiah Tanojo

Also Present: Honorable L. Michael Clark, Superior Court
Honorable Katherine Lucero, Superior Court
Honorable Margaret Johnson, Superior Court
Honorable Patrick Tondreau, Superior Court
Octavio Jimenez, Superior Court
Chris Arriola, District Attorney's Office
Diane Teves, Probation Department
Elsa Jennings, Probation Department
Michael Clarke, Probation Department
Daniel Camp, Alternate Defender's Office
Jose Franco, Public Defender's Office
Ruby Marquez, LACY
Joy Hernando, FLY
Jennifer Hubbs, DFCS/RAIC
Jenny Lam, County Counsel
Keith Neumer, San Jose Police Department
Yvette Irving, Santa Clara County Office of Education (SCCOE)
Chia-Chen Lee, VMC
Alvaro Viramontes, YWCA

Guests Present: Lyn Johnson, Private Citizen
Robert Barnes, Private Citizen
Carol Rhoads, Private Citizen
Michelle Osbourne, Private Citizen

Call to Order & Introductions: Chair Blake called the meeting to order at 12:17 p.m. All who were in attendance stated their names and organization.

Agenda Approval:

Moved by Commissioner Manchester and seconded by Commissioner Colunga, the agenda was approved unanimously.

Public Comments/Oral Petitions: Parent Michelle Osbourne expressed her concerns about the handling and processing of her sons case.

Swear-In of New Commissioners: Judge Tondreau administered the oath of office to new commissioners Courtney Macavinta and Gustavo Gonzalez.

Approval of Minutes:

Moved by Commissioner Manchester and seconded by Commissioner Tarpey to approve the minutes of February 3, 2015 which passed unanimously.

REPORTS

Chair's Report: Commissioner Colunga reported on the following:

- JJC membership committee attempted to fill three (3) vacancies during the month of February two (2) being filled and the third vacancy still pending, due to an illness and extended absence out of the country. Nine (9) candidates applied with the hopes to have some resolution within a week.
- Chair Blake thanked all for work done on the User Survey.
- Chair Blake accepted an award from the Children's Summit on behalf of the work done by JJC.

Juvenile Justice Court: Judge Tondreau reported on the following:

- Training on March 4, 2015 at 3:30 on the fourth floor training room with the Respect Institute, dealing with youth in giving them tools to develop respect and push back disrespect and to build self-esteem.
- April 4, 2015 Systems Training Judge Tondreau will be presenting on confidentiality in Juvenile Court W & I Code Section 827.
- Beyond the Bench will be held on March 27, 2015 all day at the St. Claire Hotel with guest speaker Laura van Dernoot Lipsky, founder and director of the Trauma Stewardship Institute. There will be three (3) plenary sessions with Disproportionate Minority Contact with the Burns Institute and Marc Buller from the DA's Office. The afternoon session will be on Moving Juvenile Court from where it is to where you want it to be with Jacqueline van Wormer. Shawn Marsh, with Institute for National Council for Juvenile & Family Court Judges will present Adolescence: Beyond Pimples, Pink Hair and Prom Dresses.

Judge Johnson reported on the following:

- Dismissals and Sealing's pursuant to W&I 786 has created a lot more cases because these cases are now being put on calendar which they weren't before.
- Prop 47, which reduced certain felonies to misdemeanors automatically by operation of law, are being put on calendar or they are coming up on old petitions when new petitions are received which has increased the case load.
- Computers were down court-wide for most of yesterday.
- Sad to report that a juvenile was killed in car accident on Saturday as a result of a race, in a stolen car, with another car.

Commissioner Gonzalez asked about the process of sealing cases. Judge Johnson explained that if a juvenile successfully completes probation and does not have a serious felony the record can be automatically sealed.

Judge Lucero reported on the following:

- Leadership of Probation is forming a virtual Re-Entry Center. Instead of sending youth to the adult re-entry center when Probation Termination On Release (PTOR), they are attempting to have a multi-disciplinary team meeting which will connect the youth with a part case manager part mentor through the City of San Jose, who has the most resources, and pursuant to Cal Grant. There is a 50% arrest rate after the PTOR of youth in the first 12 months. Brain science shows that the brain of an adolescent doesn't stop growing until age 25, when executive function becomes present. Probation is committed to having services in place for the youth before they leave the system.
- Judge Lucero is a member of the National Council of Juvenile and Family Court Judges and was recently on Capitol Hill. Judge Lucero pointed out the Santa Clara County is highly respected and is a model for the entire nation and the only county in the nation who has hired someone to deal with the disproportionality issues.
- Path to Services Court will have a training on March 26, 2015 by Dr. van Wormer on Incentives and Sanctions and are considering calling it Incentives and Interventions.

Dependency Court: Judge Clark had nothing to report.

Department of Children & Family Service/Children's Receiving Center: Jennifer Hubbs reported on the following:

- Moving forward with the re-design process.
- Continuum of Care Reform has resulted in Group homes and Emergency Shelters in the State being considered for closure with the receiving center to close however, the assessment center will stay.
- Two (2) youth went over the 24 hours mark due to traffic issues and one stayed at the receiving center an extra hour so that he could go home with his father instead of foster care.
- Moving forward with the Resource Family Approval Process, which is the new process for licensing foster parents as foster/adopt homes. The approval process takes 90 days. Concurrent approval at the same time. You apply for one approval. Fourteen (14) families have graduated from the program. Santa Clara County is one of five counties in the pilot program.

Judge Lucero asked with the streamlining of the 90 day process, is everyone taking the program. Ms. Hubbs said yes, relatives and non-relatives extended family included.

Probation Department Juvenile Program: Elsa Jennings reported on the following:

- The population report for October was distributed. The population at Juvenile Hall is 106 with 97 boys and 9 girls. The Ranch population is at 37, with 36 males and 1 female.
- Black History celebration month was a huge success with a full, engaging program including a full traditional lunch. Each unit participated with poetry, essays and rap. Jeff Moore from NAACP was the guest speaker.
- The Animal Assisted Program is complete and a full report from the mental health therapist has been submitted to the executive team which was very positive. Sixteen (16) boys in B8 participated in the program which was an eight (8) week cycle with four (4) youth participating in each cycle. The program wanted to measure the increase of self-concept and the decrease of depression, anxiety and overall anger. The program has promising results. Looking for a dog for the next program which will be with B-9.

Commissioner Tarpey asked how the only female at the Ranch is doing. Ms. Jennings said overall she is doing well. It was explained that she has 24 hour supervision. She participates in all activities at the Ranch.

Ms. Michelle Osbourne (private citizen) asked about the population at Juvenile Hall and the Ranch.

Commissioner Gonzalez asked about if the race/ethnic ratio has stayed consistent as far as the population. Chair Blake said that is one of the biggest issues that the commission has been involved with is the fact that the ratios have stayed the same.

Dana Bunnett commented about the one female at the Ranch and suggested putting heads together and be creative about having pre-disposition placement. Chair Blake said this is the second lone female at the Ranch adding that they both have done well and the commission will continue to take a look at.

Behavioral Health - Mental Health & Alcohol and Drug Services: No report.

Dana Bunnett from Kids in Common reported on the following:

- The Children's Summit recognized the Juvenile Justice Systems Partners.
- Even though the issue of disproportionality still exists, there has been outstanding changes pointing out that in 2011 there were 300 kids in Juvenile Hall at any given time and now there are around 100 with fewer Latinos and African Americans.
- Newsletter and website will have the link to the Juvenile Justice Systems Partners video.
- Keynote speaker was Dr. Victor Rios which can be viewed on Ted Talks.
- PowerPoints will be up on the website eventually.
- Spring Workshops will be on the Kids in Common website.

Commissioner BurtonBurke added that Dr. Rios had a wonderful phrase that said "Instead of our kids being At-Risk, they were At-Promise Youth," suggesting that JJC should adopt that phrase.

Judge Tondreau commented on how wonderful the Summit was and how great a presentation Dr. Rios gave adding that they recommended Dr. Rios to the Judicial Council as the primary speaker at the State Beyond the Bench Conference.

Law Enforcement Agencies: No report.

District Attorney's Office, Juvenile Justice: Mr. Arriola reported on the following:

- Concerns about how cases are handled are taken very seriously.
- Four (4) new attorneys are on board with four (4) Grade four (4) senior deputies in each courtroom to keep continuity in charging.
- Bi-Lingual Notario (Immigration) Fraud presentations by Community Prosecutor Josue Fuentes are being held at various locations which can be found on the website as the DA's Office is very concerned.
- Meetings continue with the Burns Institute especially on the Direct File cases. The DA is committed to looking at about 25% of the Direct File cases. The average for Direct File cases is 30 to 50 with 51 being the highest. There were three (3) Direct File cases in February, 2 murders and one attempted murder.
- Attended the Mayor's Gang Prevention Task Force Summit.

Ms. Osbourne commented and asked about the DA's Office kicking back police reports as well as the entire process and if a citizen can have input. Mr. Arriola said that they kick back about 10% of the cases.

Chair Blake asked of Ms. Osbourne that any concerns she has can be submitted in writing as they cannot discuss particulars in a public meeting.

Officer Keith Neumer from San Jose Police Department concurred with DDA Arriola adding that the appropriate venue is the court adding that there are systems in place and that outcomes can be reversed at the District Attorney level or at the judge's level.

Independent Defender's Office: No report.

Alternate Defender Office: Daniel Camp reported on the following:

- Mr. Camp reported that the office lost one (1) position and consequently only two (2) alternate defenders will be handling 3 different department. The position was re-assigned to help in the handling of the influx of homicide cases in adult court. Beth Kendall will be assigned to Dept. 79 and Daniel Camp will be assigned to Dept. 77 and the two will split representation of juveniles in Dept. 78. Mr. Camp said he will also be handling CITA and JTC adding that this will not affect the quality of representation however it may take longer to handle cases.
- Alternate Defender's Office, Independent Defender's Office and the Public Defender's Office have started discussions on the ways to reduce the amount of time that parents have to be present in court before their cases are called with a goal to come up with a system that reduces that time because parents are increasingly frustrated when they arrive at 8:15 a.m. and are ordered back after 1:30 p.m. This negatively effects their employment and lifestyle. Michelle Fernandez is working on this and will seek approval from the presiding judge.

Mr. Arriola and Judge Tondreau concurred with Mr. Camp adding that they are willing to help.

Public Defender's Office: Mr. Jose Franco reported on the following:

- Ms. Nedda Alae will be replacing Ilona Solomon in Dept. 79 effective March 30, 2015.
- Continuing with trainings and informational sessions that were started in January.

In February the following occurred:

- Received a presentation from Probation Department about Violation of Probation (VOP) response grid.
- Received training from Jesus Sanchez on the Juvenile Assessment Instrument System (JAIS).
- Attended TARGET training with Julian Ford.
- Division of Juvenile Justice (JJC) - saw both facilities and saw two clients.
- Ruby Marquez from LACY gave presentation and overview of the Dependency Court System and information on their services specifically on special immigrant juvenile status and Mental Health Advocacy project.
- Attorney's from the LACY Advocacy Center gave a presentation on their representation of parents with an afternoon of observing Judge Schwartz' dependency court room.
- Set up a training with PDO attorneys to go electronic.

Legal Advocates for Children & Youth (LACY): Ruby Marquez reported on the following:

- Working with Judge Lucero on the Education Champions Court.

Medical Services: Chia-Chin Lee reported on the following:

- Ten (10) San Jose State University Nursing Students will start training.

- Correctional medicine has become part of the nursing curriculum at SJSU.

Alternative Schools Department, COE: Yvette Irving reported on the following:

- Board President Darcie Green spent ten (10) hours at five (5) of the six (6) schools ending her day observing the college class at Osbourne and will update the Board at the next COE Board meeting.
- Silicon Valley Creates, who work in partnership with the Alternate Education Department is up - and running at all sites with digital story-telling and hands-on activities.
- All are invited to spring clean their closets as there is a lack of business attire for the youth for job interviews. There has been a disproportionate amount of success in getting students interviews with different companies including Fortune 500 companies. During the month of March the Student Leadership is putting on a clothing drive to outfit the students for job interviews. Monetary donations are welcomed.

Victim Witness Assistance Center: None

YWCA Rape Crisis Center: No report.

Announcements/Correspondence: None

Old Business: None

New Business: None

Adjourn to Executive Session: Chair Blake adjourned the meeting to Executive Session at 1:2 p.m.

Next Meeting: April 7, 2015.

Respectfully submitted,

Barbara Crump

County of Santa Clara

Memorandum



To: Juvenile Justice Commission

Date: March 3, 2015

From: Elsa Jennings, Probation Manager – JH
Diana Teves, Probation Manager – JH

Subject: Probation Department Population Sheet

Juvenile Hall Population	106	Males 97/ Females 9
James Ranch	37	Males 36/ Females 1
12 and under	0	
Awaiting Placement	4	

	Male	Females	Total
EMP	49	11	60
CRP	17	2	19
JH Commits	1	0	1
Ranch Wait/James	3	0	3
EDGE	10	1	11
PEAK	12	2	14



Santa Clara County Probation Department
 Juvenile Hall & Ranches Daily Statistics
 Sunday, Mar 1, 2015

Juvenile Hall & Ranches Population

GENDER & ETHNICITY	FEMALE	MALE	ASIAN	BLACK	CAUCASIAN	HISPANIC	OTHER	TOTAL
JUVENILE HALL	9	99	1	10	9	84	4	108
JAMES RANCH	1	35	1	2	1	32		36
TOTAL	10	134	2	12	10	116	4	144

Facility Capacity

FACILITY	TOTAL POP	CAPACITY	% CAPACITY
JUVENILE HALL	108	390	28%
JAMES RANCH	36	84	43%
TOTAL	144	474	30%

Juvenile Hall by Unit

UNIT	TOTAL
B02 (ASSESSMENT & ORIENTATION)	12
B03 (COMMITMENT/RANCH WAIT)	19
B04 (MENTAL HEALTH)	8
B07 (GEN POP)	21
B08 (SECURITY)	19
B09 (SECURITY)	20
G01 (GIRL GEN POP)	9
TOTAL	108

Juvenile Hall by Custody Status & Average Length of Stay in Days (ALOS)

STATUS GROUP	STATUS	COUNT	%	PRE-DISP ALOS	POST-DISP ALOS	ALL ALOS
PRE-DISP	AWAITING DETENTION HEARING	12	11%	2.9		2.9
	DETAINED, AWAITING COURT	34	31%	23.0		23.0
	ADJUDICATED, AWAITING DISPO	18	17%	34.3		34.3
PRE-DISP GROUP		64	59%	22.4		22.4
POST-DISP	COMMITTED TO JH	1	1%	0.0	20.0	20.0
	AWAITING RANCH	4	4%	0.0	7.5	7.5
	AWAITING PLACEMENT	6	6%	16.3	13.7	30.0
POST-DISP GROUP		11	10%	8.9	12.0	20.9
OTHER	COURTESY HOLD (DOC)	33	31%			267.2
OTHER GROUP		33	31%			267.2
TOTAL		108	100%	20.4	12.0	97.0



Santa Clara County Probation Department
 Juvenile Hall & Ranches Daily Statistics
 Sunday, Mar 1, 2015

Facility By Age

AGE	13	14	15	16	17	18	TOTAL
JUVENILE HALL	4	9	18	21	47	9	108
JAMES RANCH		2	1	7	16	10	36
TOTAL	4	11	19	28	63	19	144

Juvenile Hall & Ranch By Offense

OFFENSE CATEGORY	JH	JR	TOTAL
FELONY CRIMES AGAINST PEOPLE	28	13	41
DRUGS, ALCOHOL RELATED OFNS	1	2	3
OTHER CRIMES AGAINST PEOPLE		1	1
PROPERTY CRIMES	12	1	13
WEAPON CRIMES	2	4	6
OTHER CRIMES	14	4	18
RETURN/COURTESY HOLD/OTHER	51	11	62
TOTAL	108	36	144

Breakdown of Return/Courtesy Hold/Other Admits to JH

DESCRIPTION	TOTAL
PROGRAM FAILURE - COMMUNITY RELEASE PROGRAM	1
PROGRAM FAILURE - ELECTRONIC MONITORING PROGRAM	3
PROGRAM FAILURE - PEAK	1
PROGRAM FAILURE - PLACEMENT	3
PROGRAM FAILURE - JAMES RANCH	1
FAILURE TO OBEY - DRUG/ALCOHOL	1
FAILURE TO OBEY - GANG ACTIVITY	2
FAILURE TO OBEY - PROTECTIVE ORDER	1
FAILURE TO OBEY - OTHER	1
WARRANT - ARREST	3
COURTESY HOLD	33
OTHER ADMITS	1
TOTAL	51



Santa Clara County Probation Department
 Juvenile Hall & Ranch Population Monthly Average
 Reporting Period: February, 2015

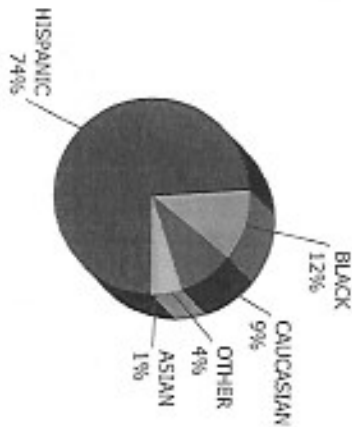
Facility Capacity Population Average for February, 2015

FACILITY	FEMALE	MALE	TOTAL	CAPACITY	% CAPACITY
JUVENILE HALL	15	94	109	390	28%
JAMES RANCH	1	36	37	84	44%
TOTAL	16	130	146	474	31%

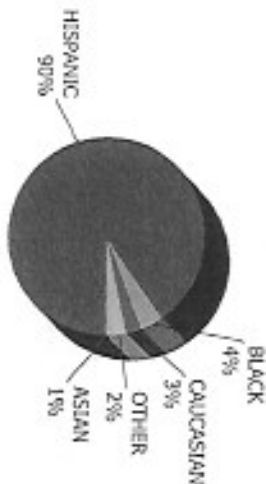
Ethnicity Population Average for February, 2015

FACILITY	ASIAN	BLACK	CAUCASIAN	HISPANIC	OTHER	TOTAL
JUVENILE HALL	2	13	10	80	4	109
JAMES RANCH	0	1	1	34	1	37
TOTAL	2	14	11	114	5	146

Juvenile Hall and Ranch Population Average by Ethnicity for February, 2015



JUVENILE HALL

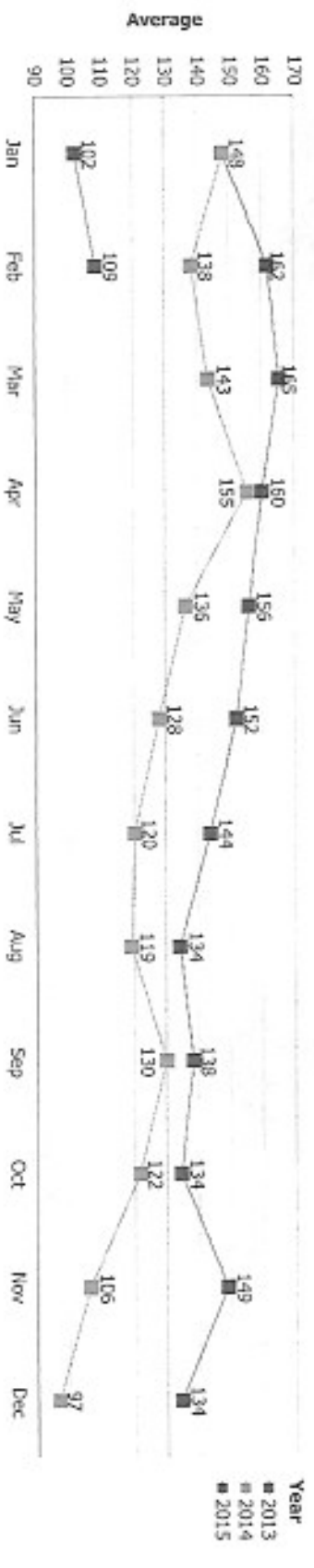
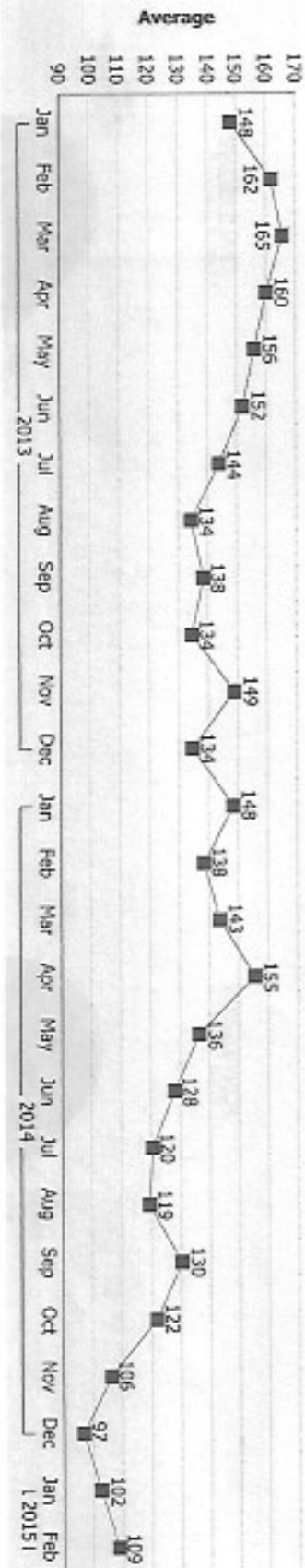


JAMES RANCH



**Santa Clara County Probation Department
 Juvenile Hall Population Monthly Average
 Reporting Period: February, 2015**

Juvenile Hall Monthly Average Trendline



JH AVERAGE	Jan	Feb	Mar	Apr	May	Jun	Jul	Aug	Sep	Oct	Nov	Dec
	2013	17	9	12	17	18	16	18	20	17	15	14
FEMALE	17	9	12	17	18	16	18	20	17	15	14	9
MALE	131	152	154	143	137	136	126	114	122	120	135	125
TOTAL	148	162	165	160	156	152	144	134	138	134	149	134
2014	9	9	12	17	15	12	12	9	8	9	10	11
FEMALE	9	9	12	17	15	12	12	9	8	9	10	11
MALE	139	129	131	138	121	116	108	110	122	112	96	86
TOTAL	148	138	143	155	136	128	120	119	130	122	106	97
2015	13	15										
FEMALE	13	15										
MALE	89	94										
TOTAL	102	109										

**DFCS CAN Center & Referrals
Monthly Statistical Summary
February, 2015**



CAN Center Telephone Calls

Total Hotline Calls Responded = Calls Answered + VM Returned

	2015 Feb*	2015 Jan*	2014 Dec	2014 Nov	2014 Oct	2014 Sept	2014 Aug	2014 July	2014 June	2014 May	2014 April	2014 March	2014 Feb
Calls Answered	1667	1362	1601	1693	2185	2103	1606	1456	1508	2108	1877	1996	1493
Voicemail returned	59	115	65	54	74	140	84	14	74	114	92	212	251
Total Hotline Calls Responded	1726	1477	1666	1747	2259	2243	1690	1470	1582	2222	1969	2208	1744
% Calls Responded	79%	95%	95%	94%	93%	91%	93%	96%	91%	92%	90%	85%	82%
Joint Response Calls from Law Enforcement	39	32	22	17	34	25	25	12	30	23	32	26	40
TOTAL CALLS RESPONDED	1765	1509	1688	1764	2293	2268	1715	1482	1612	2245	2001	2234	1784
Total Incoming Calls	2196	1556	1756	1852	2435	2465	1825	1536	1733	2406	2177	2599	2131
Abandoned Calls	291	85	78	94	154	189	126	48	128	156	171	280	317
% Abandoned Calls	13%	5%	4%	5%	6%	8%	7%	3%	7%	6%	8%	11%	15%

Total Hotline Calls Responded = Calls Answered + VM Returned from 299-2071 hotline number

TOTAL CALLS RESPONDED - includes Joint Response Calls from Law Enforcement

* January and February 2015 months experienced a phone system upgrade that interrupted calls entering the CAN Center with a 66 system call error for February

Summary of ER Referrals

Month	Feb2015	Jan2015	Dec2014	Nov2014	Oct2014	Sept2014	Aug2014	July2014	June2014	May2014	Apr2014
Immediate	156	164	142	162	209	210	149	136	162	218	192
10-day	414	479	449	437	563	602	452	405	422	561	517
Evaluated Out	126	147	120	150	195	170	151	133	138	202	210
Not Determined	10	9	8	8	6	14	4	3	4	11	7
Total	706	799	719	757	973	996	756	677	726	992	926

*Data from Safe Measures

Original 300 Petitions Filed – Feb 2015

Month	Feb2015	Jan2015	Dec2014	Nov2014	Oct2014	Sept2014	Aug2014	July2014	June2014	May2014	Apr2014
Original 300 Petitions	43	37	38	36	71	45	41	60	42	63	63

From: FAQs report – Active Children and Families

**Santa Clara County Receiving Center
Monthly Statistical Summary
Feb, 2015**



Placement for Intakes & Temporary Custody

ESH-CFH	ESH-FFA	ESH-GH	Relative NREFM	Runaway	Parents	Hospital	PR Other County	NYP	Juv Hall	SILP	Other
18	17	15	7	15	8	7	4	0	0	0	0

*See below for Placement Type Definition

Total Sibling Groups Separated

2 sibs	3 sibs	4 sibs	5 sibs	6 sibs	7 sibs	8 sibs	9 sibs	10 sibs	Total # children Separated
0	2	1	2	0	0	0	0	0	20

Number of Runaway Incidences for the Month

Admit Date & Time	Child's Gender	Age	Ethnicity	Runaway Date & Time
02/03/15 at 1515 hrs	M	17	White	02/03/15 at 1600 hrs
2/5/15 at 1700 hrs	M	17	White	2/5/15 at 1715 hrs
02/05/15 at 0855 hrs	F	17	White	02/05/15 at 1015 hrs
02/06/15 at 1120 hrs	M	17	White	02/06/15 at 1135 hrs
02/10/2015 at 2205 hrs	F	16	Hispanic/White	02/11/2015 at 1110 hrs
02/11/2015 at 2208 hrs	M	17	White	02/12/2015 at 1100 hrs
02/11/2015 at 2214hrs	F	16	Hispanic/White	02/12/2015 at 1100 hrs
2/13/15 at 1632 hrs	F	14	Latino	2/13/15 at 1815 hrs
2/17/15 at 1430 hrs	M	17	Latino/White	2/17/15 at 1500 hrs
02/19/2015 at 2200 hrs	M	14	Hispanic/White	02/19/2015 at 2200 hrs
02/22/2015 at 120 hrs	F	16	Hispanic/White	02/22/2015 at 1445 hrs
2/25/15 at 1330 hrs	M	17	White	2/25/15 at 1345 hrs
2/25/15 at 1530 hrs	F	16	Hispanic/White	2/25/15 at 1850 hrs
2/25/15 at 1500 hrs	M	14	Hispanic/White	2/25/15 at 2020 hrs
2/26/15 at 1300 hrs	M	14	Hispanic/White	2/26/15 at 1405 hrs

Number of Children Who Stayed Over 24 Hours for the Month

<1 yr	1-2 yrs	3-5 yrs	6-10 yrs	11-15 yrs	16-17 yrs	18-20 yrs	Total # children
1	1	0	0	1	3	0	6

*Definitions of Placement Codes:

- ESH-CFH – Emergency Satellite Home-County Foster Home
- ESH-FF – Emergency Satellite Home- Foster Family Agency
- ESH-GH - Emergency Satellite Home-Group Home
- Relative/NREFM – Relative/Non Relative Extended Family Member
- Runaway
- Parent
- Hospital
- NYP - Not Yet Placed
- PR to Counties/States – Permanent Release to County/State
- To JH – To Juvenile Hall
- SILP – Supervised Independent Living Placement

**Santa Clara County Receiving Center
Monthly Statistical Summary
February, 2015**



Total Non-Dependent Intakes—Non-Dependent children who have been removed from their caregiver and went to the RAIC.

Feb2015	Jan2015	Dec2014	Nov2014	Oct2014	Sept2014	Aug2014	July2014	June2014	May2014	Apr2014	Mar2014	Feb2014
47	52	58	44	64	44	37	63	55	70	61	48	66

Non-Dependent - Ethnicity

African Ancestry	9	19%
Asian	2	4%
Caucasian	16	34%
Latino	20	43%
Other	0	0%

Non-Dependent Intake Age & Gender Breakdown

<1 yr	6	13%
1-2 yrs	9	19%
3-5 yrs	3	6%
6-10 yrs	14	30%
11-15 yrs	7	15%

16-17 yrs	8	17%
18-20 yrs	0	0%
Gender	Male	Female
	19	28

Non-Dependent Intake - Sibling Groups

2 sibs	1	5 sibs	2	8 sibs	0	
3 sibs	3	6 sibs	0	9 sibs	0	
4 sibs	1	7 sibs	0	10 sibs	0	
					Total # children in sibling groups	25

Total Dependent Intakes—Dependent children who have been removed from their caregiver and went to the RAIC.

Feb2015	Jan2015	Dec2014	Nov2014	Oct2014	Sept2014	Aug2014	July2014	June2014	May2014	Apr2014	Mar2014	Feb2014
23	13	30	10	15	10	6	11	3	16	11	13	19

Dependent - Ethnicity

African Ancestry	1	4%
Asian	3	13%
Caucasian	4	17%
Latino	15	65%
Other	0	0%

Dependent Intake Age Breakdown

<1 yr	0	0%
1-2 yrs	0	0%
3-5 yrs	0	0%
6-10 yrs	1	4%
11-15 yrs	7	30%

16-17 yrs	15	65%
18-20 yrs	0	0%
Gender	Male	Female
	17	6

Dependent Intake - Sibling Groups

2 sibs	1	5 sibs	0	8 sibs	0	
3 sibs	0	6 sibs	0	9 sibs	0	
4 sibs	0	7 sibs	0	10 sibs	0	
					Total # children in sibling groups	2

Total # of Intakes	70
---------------------------	----

Total Temporary Custodies—Temp Custody covers all children who have been removed from their caregiver but did not go to the RAIC.

Feb2015	Jan2015	Dec2014	Nov2014	Oct2014	Sept2014	Aug2014	July2014	June2014	May2014	Apr2014	Mar2014	Feb2014
21	23	17	20	31	32	22	38	28	27	18	32	22

Temporary Custodies - Ethnicity

African Ancestry	1	5%
Asian	1	5%
Caucasian	6	29%
Latino	13	62%
Other	0	0%

Temporary Custodies - Age Breakdown

<1 yr	4	19%
1-2 yrs	4	19%
3-5 yrs	2	10%
6-10 yrs	3	14%
11-15 yrs	3	14%

16-17 yrs	5	24%
18-20 yrs	0	0%
Gender	Male	Female
	11	10

Temporary Custodies - Sibling Groups

2 sibs	3	5 sibs	0	8 sibs	0	
3 sibs	1	6 sibs	0	9 sibs	0	
4 sibs	0	7 sibs	0	10 sibs	0	
					Total # children in sibling groups	9

Total # of Intakes & Temporary Custodies	91
---	----

Number of Daily Intakes and Temporary Custodies in calendar format

Su	M	Tu	W	Thur	Fri	Sat
3	6	3	2	9	2	0
0	2	4	6	2	3	2
2	0	6	1	7	2	0
2	5	7	7	2	4	0

Average Daily Intakes & TC's for the Receiving Center	Feb 2015	Jan 2015	Dec 2014	Nov 2014	Oct 2014	Sept 2014	Aug 2014	July 2014	June 2014	May 2014	Apr 2014	Mar 2014	Feb 2014	Jan 2014	Dec 2013	Nov 2013
	3.3	2.8	3.4	2.5	3.5	2.9	1.9	3.7	2.8	3.6	3.0	3.0	3.8	3.0	2.4	2.4